

**P E R F O R M A N C E**  
*designed for Chocolate Machines*

# PERFORMANCE

*designed for Chocolate Machines*

PERFORMANCE, diverse tipologie di stampi, tutte con un denominatore comune: elevate performance produttive ottenute grazie all'interazione con le macchine per il cioccolato.

Stampi in policarbonato con caratteristiche che li rendono adatti a tutte le macchine presenti sul mercato e consentono un automatismo produttivo, pur mantenendo l'esclusività della produzione artigianale.

*PERFORMANCE, different moulds types, all with a common denominator: high production performance achieved through interaction with chocolate machines.*

*Polycarbonate moulds with features that make them suitable for all machines on the market and provide production automation, while maintaining the exclusivity of artisan production.*

## PERFORMANCE

comprende le linee/includes the lines

[ONE SHOT]

SPINNING  
MOULD



SCAN ME

SPINNING  
MOULD



[ONE SHOT]







**PERFORMANCE**  
*designed for Chocolate Machines*

## SPINNING MOULD

Stampi per soggetti in cioccolato, **adatti all'uso su tutte le macchine rotative** per il modellaggio del cioccolato, consentono elevate performance produttive. Gli stampi in policarbonato sono composti da due metà unite da calamite, complete di placca in acciaio per fissarli ai magneti della macchina.

*Moulds for chocolate subjects, suitable **for use on all rotating machines** for hollow bodies, they provide high production performance. The polycarbonate moulds consist of two halves joined by magnets, complete with a steel plate to fix them to the machine magnets.*

**Polycarbonate magnetic moulds 275 x 175 mm**

### Caratteristiche tecniche/Technical features



Chiusura con magneti  
Magnetic closure



Pioli di centraggio  
Centring pegs



Placca di metallo  
Metal plate



**Tree**

**20SR100A**

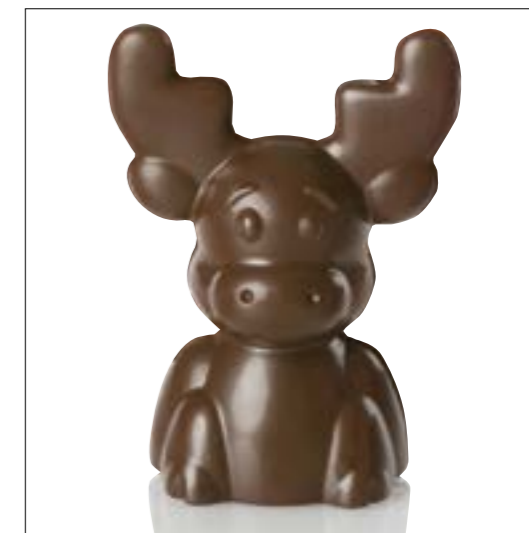
ø 110 h 152 mm  
Prod. 2 pcs - Weight ~ 200 gr  
Polycarbonate mould



**Reindeer**

**20SR101A**

88 x 56 h 120 mm  
Prod. 2 pcs - Weight ~ 70 gr  
Polycarbonate mould



**Toy**

**20SR102A**

53 x 44 h 120 mm  
Prod. 4 pcs - Weight ~ 35 gr  
Polycarbonate mould



**Diamond Ball**

**20SR103A**

ø 62 h 72 mm  
Prod. 6 pcs - Weight ~ 50 gr  
Polycarbonate mould



**Egg**

**20SR001A**

ø 104 h 150 mm  
Prod. 2 pcs - Weight ~ 230 gr  
Polycarbonate mould



**Egg**

**20SR002A**

ø 141 h 204 mm  
Prod. 1 pcs - Weight ~ 380 gr  
Polycarbonate mould





# [ONE SHOT]

Studiati con caratteristiche uniche che li rendono adatti ad essere usati con le macchine dosatrici OneShot, questi stampi in policarbonato per praline consentono un'alta produttività, tipica delle grandi realtà industriali.

*Designed with unique features that make them suitable for use with OneShot dosing machines, these polycarbonate molds for pralines allow high productivity, typical of large industrial companies.*

**Polycarbonate magnetic moulds 275 x 175 mm**

## Caratteristiche tecniche/Technical features



Chiusura con magneti  
Magnetic closure



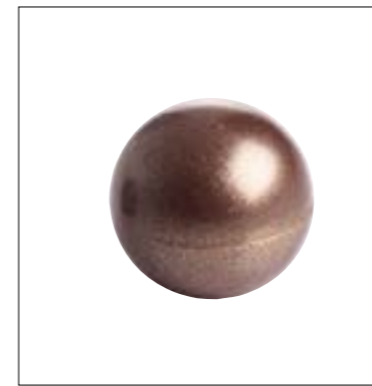
Pioli di centraggio  
Centring pegs



Sistema di incastro  
Interlocking system



Truffle



**203D01**

ø 26 h 24 mm  
Prod. 28 pcs - Weight ~ 10 gr  
Polycarbonate mould

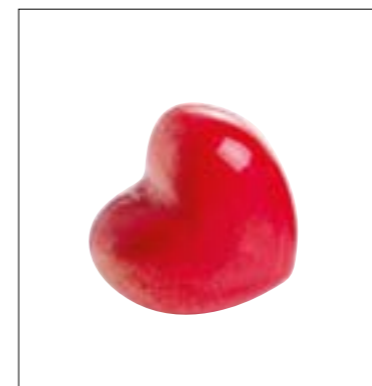
Truffle 2



**203D02**

ø 23 h 20,6 mm  
Prod. 28 pcs - Weight ~ 7 gr  
Polycarbonate mould

Heart



**203D03**

30 x 28 h 19 mm  
Prod. 28 pcs - Weight ~ 11 gr  
Polycarbonate mould

Egg



**203D04**

ø 23,5 h 32 mm  
Prod. 28 pcs - Weight ~ 10 gr  
Polycarbonate mould



MARTELLATO.COM